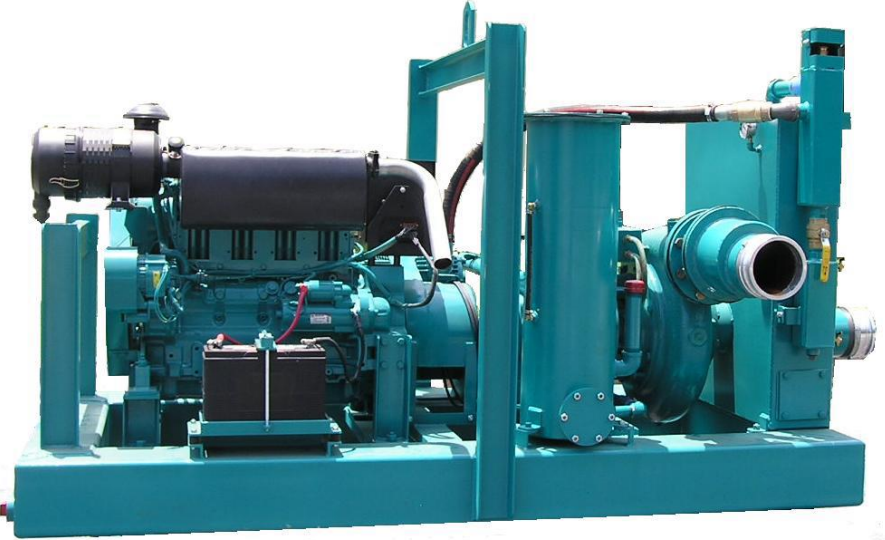
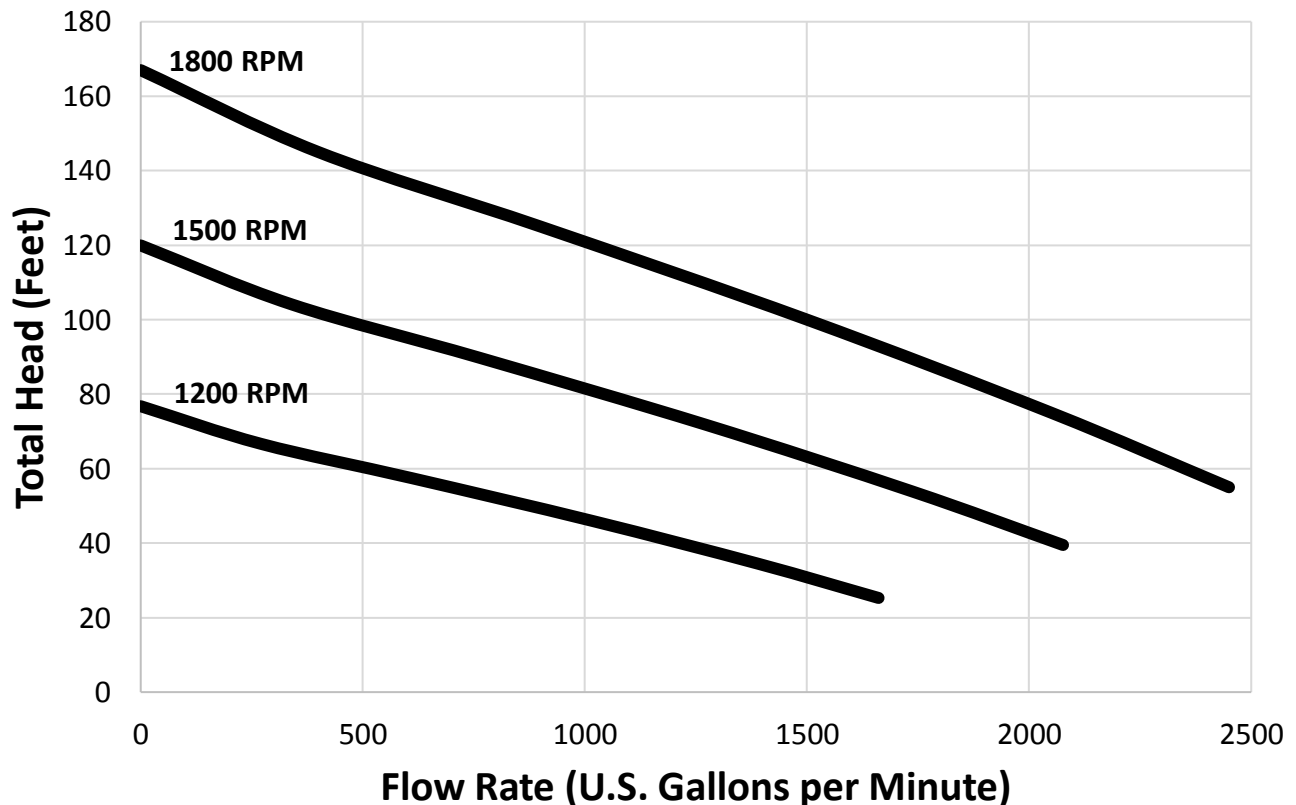


The Complete Vacuum Assisted By-Pass Pump is our most versatile pump ever. The By-Pass pump is ideally suited for sewer bypass operations, open sumping of flood areas, basins, ponds, excavations, and wellpoint dewatering with its high capacity vacuum pump. Features include solids handling to 3", high suction lift capabilities, 24 hours operating time fuel cell, run-dry seal, and optional auto start/stop control panel. Specify 6" or 8" suction when ordering.



**CDPW AutoPrime™ 6"x6" or 8"x6" Bypass Pump**



“The finest dewatering pumps and wellpoint equipment since 1923”

